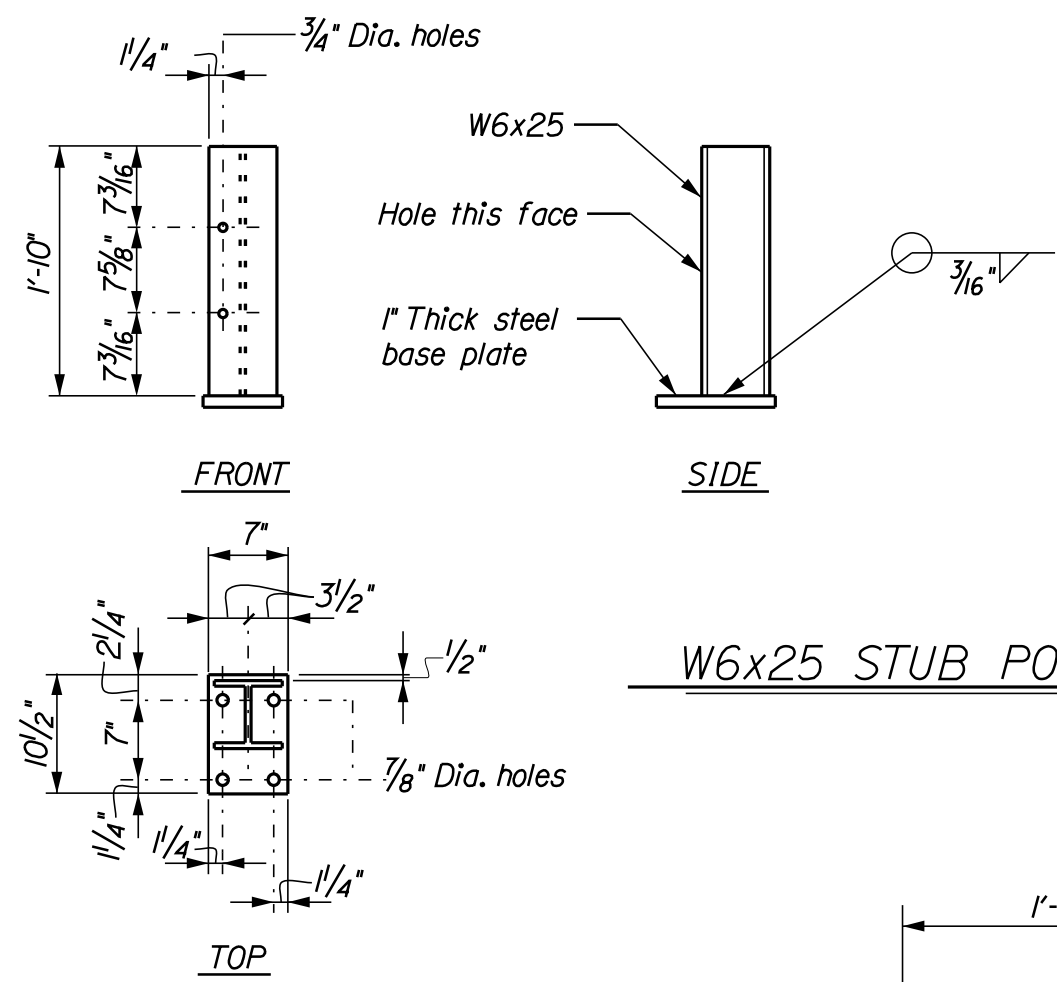
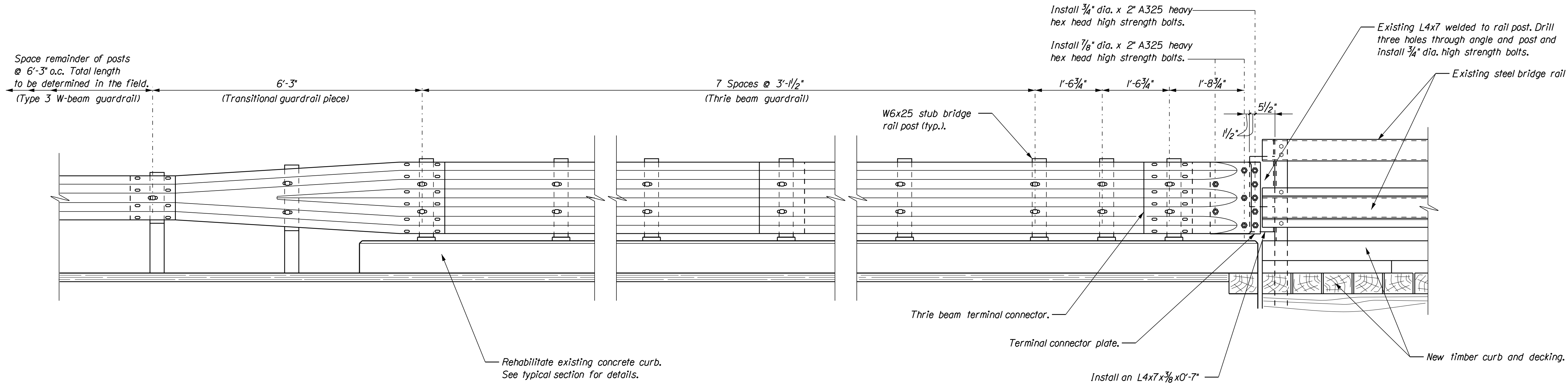
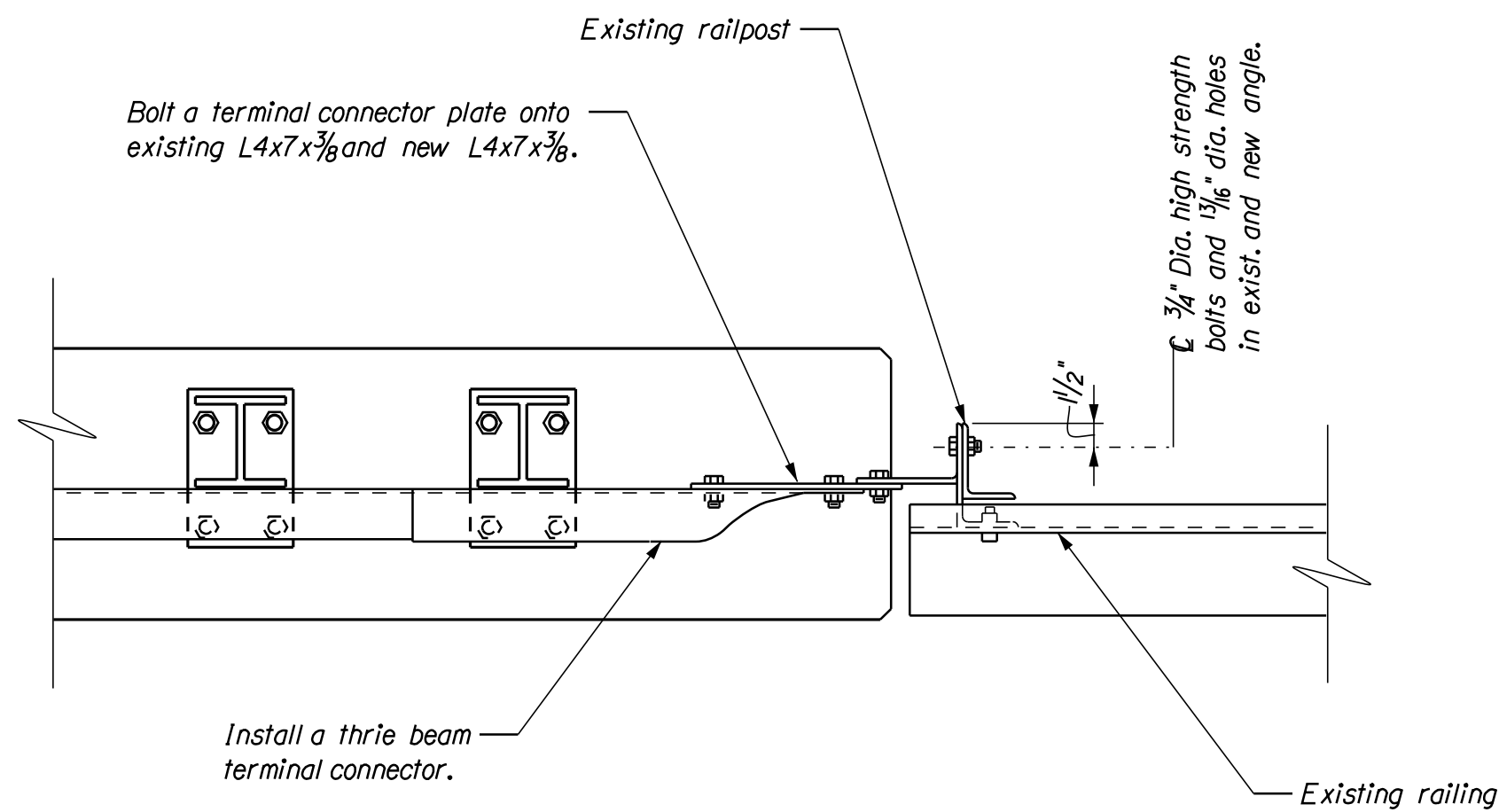


PROJECT DESIGN ENGINEER	BY	DATE
DESIGN-DETAILED	LSBanner	Aug. 2005
CHECKED		
REVISIONS		
FIELD CHANGES		

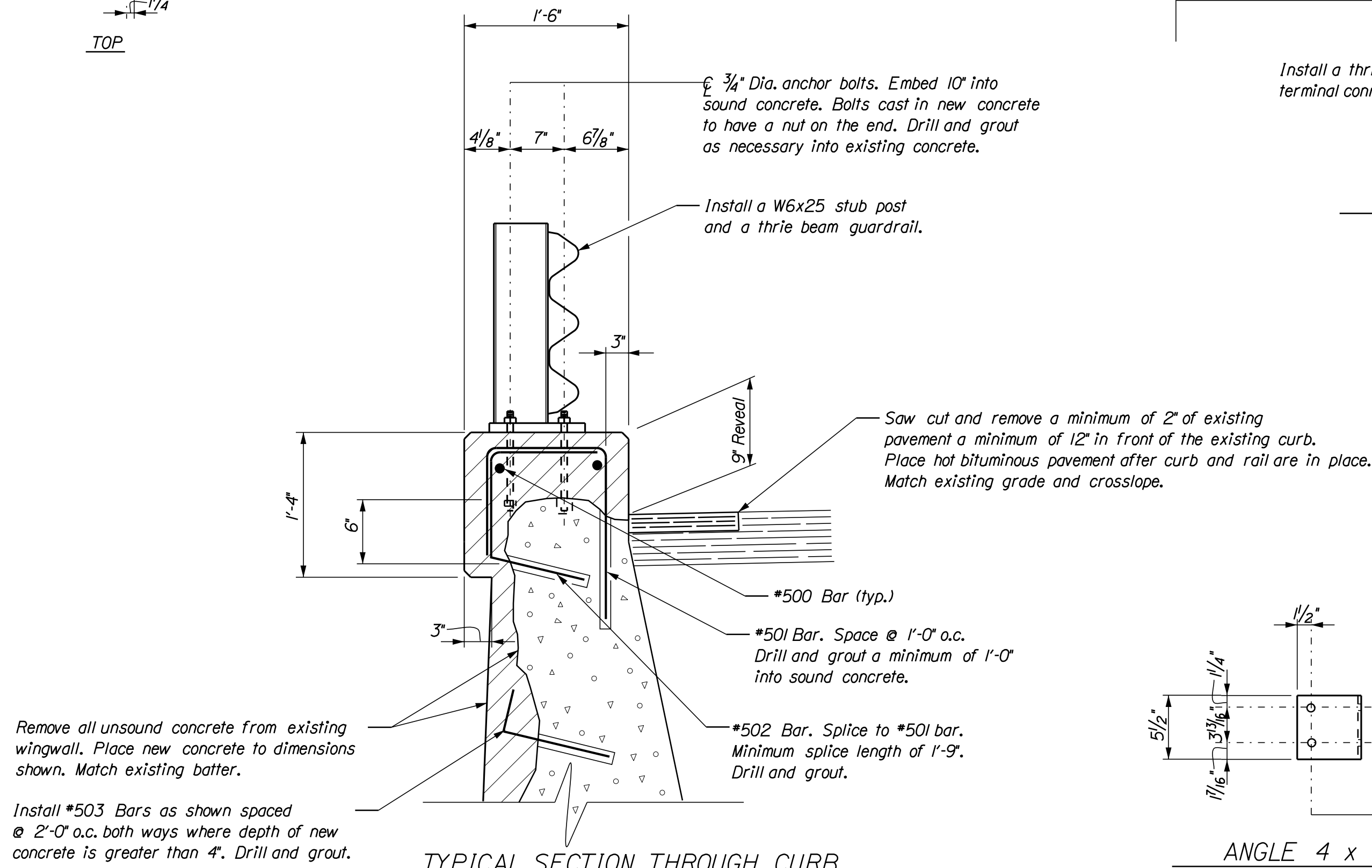
PLANS



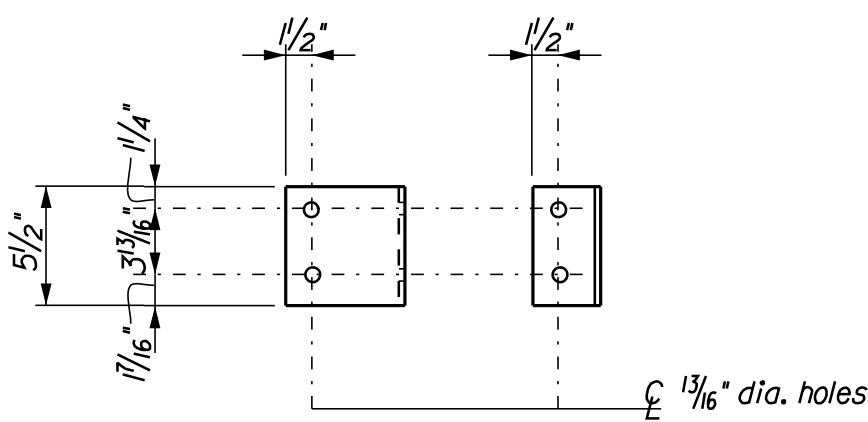
CURB/RAIL ELEVATION VIEW



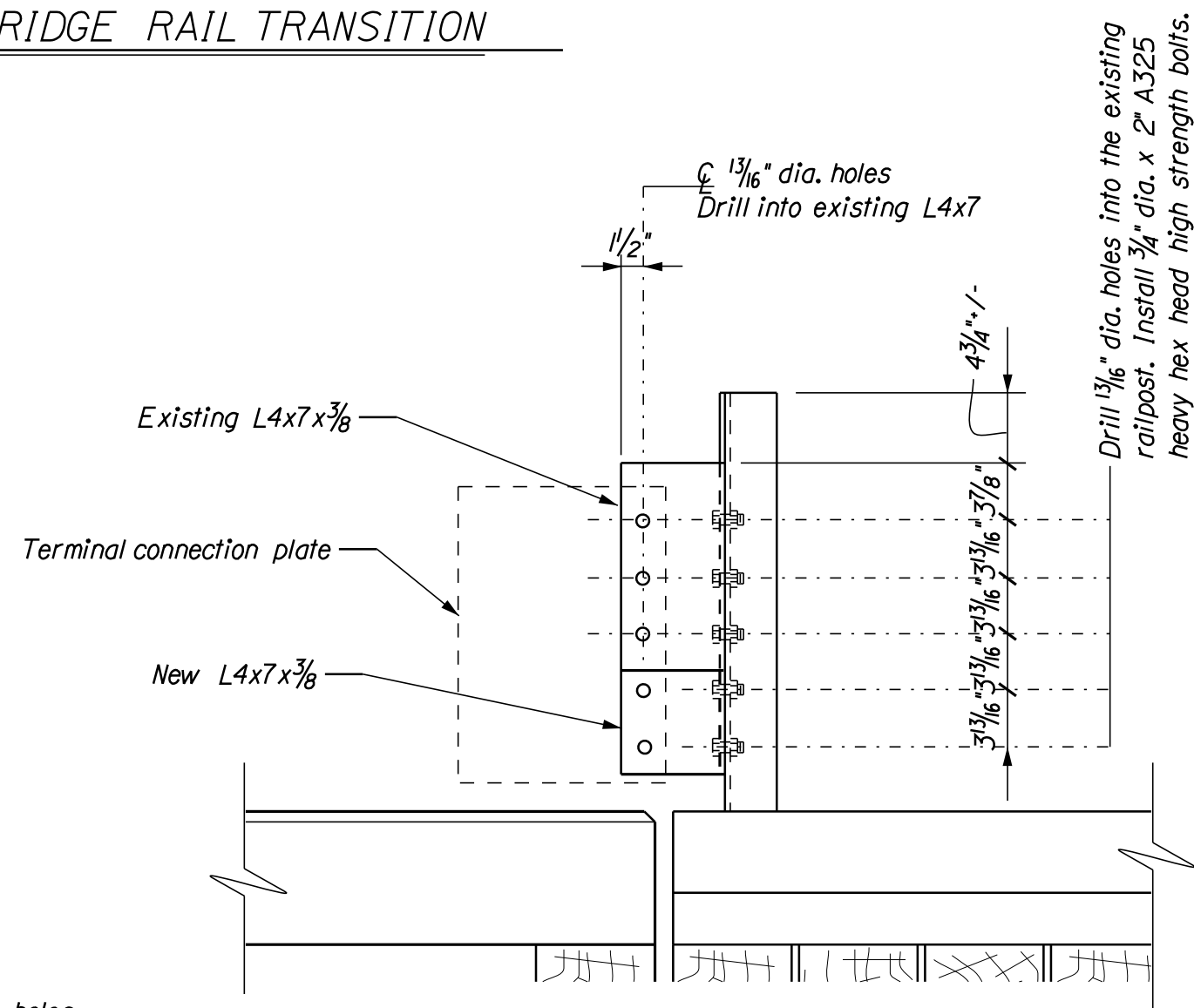
PLAN VIEW BRIDGE RAIL TRANSITION



TYPICAL SECTION THROUGH CURB

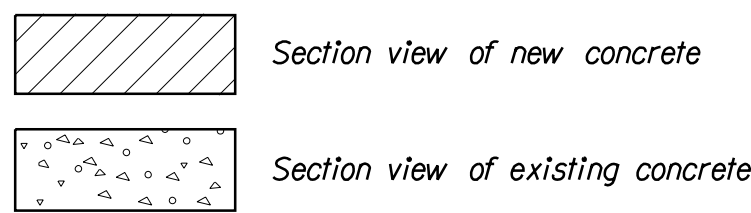


ANGLE 4 x 7 x 3/8" DETAILS



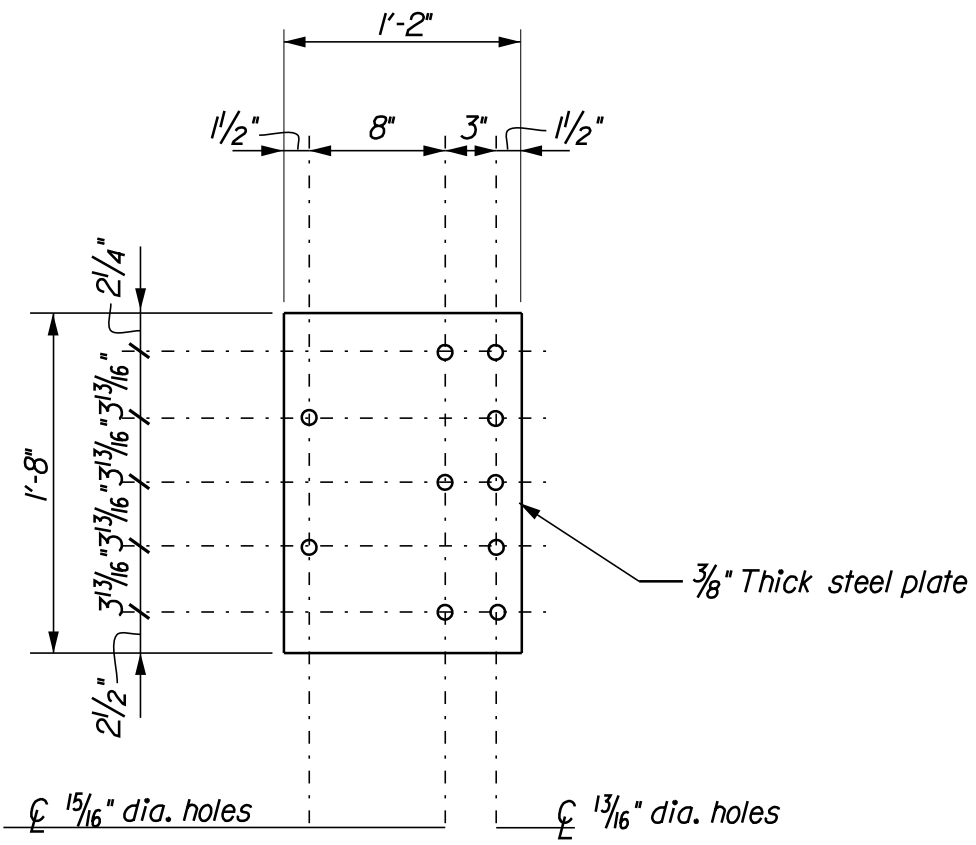
RAIL POST ELEVATION

LEGEND



GENERAL NOTES

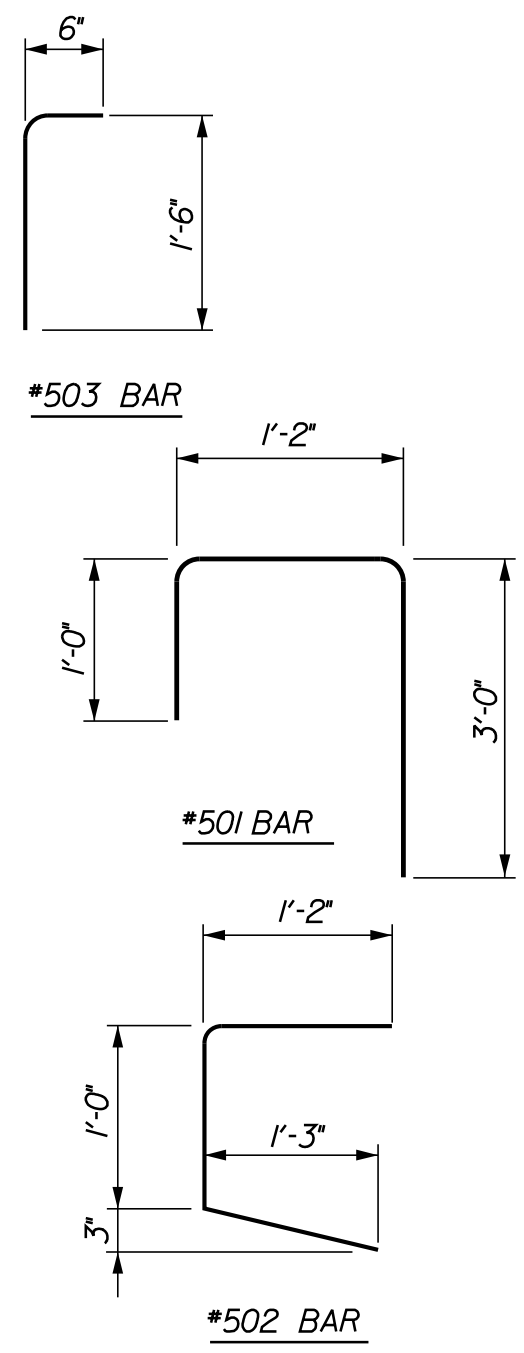
- 1...Chamfer all exposed edges of concrete 3/4"
- 2...All reinforcing steel shall have a minimum of 2" of clearance.
- 3...Splice length for a #5 bar is 1'-9"



TERMINAL CONNECTOR PLATE

REINFORCING STEEL

MARK	SIZE	NO.	LENGTH
#500	#5	8	30'-0"
#501	#5	116	5'-2"
#502	#5	116	3'-6"
#503	#5	100	2'-0"



STATE OF MAINE
DEPARTMENT OF TRANSPORTATION

LORD BRIDGE
Over
MARSH STREAM
Between
Frankfort and Monroe
Waldo County
BRIDGE TRANSITION